



# Online Casino System



By: Taylor Smith, Nick Falletta, Sam  
Bender, John Douglas, and Nick Boyle





# Scope

1. Core Gaming Services: Variety of games (slots, table games, roulette) on a secure digital platform.
2. Account & Payment Management: User registration, deposits/withdrawals, real-time balance tracking.
3. Responsible Gambling Tools: Self-exclusion features, spending limits, and safety resources.
4. Regulatory Compliance: Legal standards, fair play, data protection.
5. Marketing & Affiliates: Promotions, partnerships, user acquisition strategies.
6. User Experience & Accessibility: Intuitive UI, customer support, multi-device compatibility.





# Stakeholders and User Studies



- **Players (End-user)**

- Online Survey
- Patterns: Sports betting and blackjack
- Suggestion: Live updates on the home screen of their smartphone

- **Casino Employees**

- Guided Interview (Open-ended)
- Personal connection
- Pattern: Switching to online could affect salary and hours

- **Regulatory Agencies**

- Focus Groups (Open Conversations)
- Patterns: Responsible gambling and Accessibility
- Suggestions: AI to detect problem gambling → send risk and intervention alerts, spending limits

- **Marketing Agencies**

- Semi-Structured Interview
- Patterns: Interactive and flashy pop-up ads on create the most engagement
- Suggestion: Catering ads to different demographics based on region

## Additional Stakeholders:

- **Payment Processors**

- Provide smoothly operating and secure payment software
- Supports various payment methods

- **Security Providers**

- Use secure protocols and encryption methods
-

# Requirements



## Functional:

- Menu System - The main UI for navigating to any feature in the casino
  - People will wait only 6-8 seconds for a menu system to load ([Search Engine Land](#))
- Spending Limits - Limit the amount of money users can spend at once
- Withdraw Funds - Ability to cashout at any point
- Platform Game Addition and Developer Kit - Allows us to produce new games to then be incorporated into the casino

## Non-Functional:

- Accessibility - UI should be simple for anyone to understand, with settings for visually impaired and so on
  - Security - User's private information should be safe and secure, free from having information compromised
  - Performance - Fast loading times and instant transactions should increase user satisfaction
-

# External Interfaces



## User Auth:

- Third-party authentication system for user login, which is vital for protecting user data and preventing unwanted logins. Possible interfaces would be *SecureAuth*, *Duo*, or via *Microsoft*

## Payment Process:

- Utilize an external payment processing service to keep transactions safe and secure
  - *Stripe*, *Square*, *PayPal*, etc...

## User Assistance:

- Provide user support using either or all of the following external services:
  - 'AI' chat support window
  - Tech support help, such as *Kustomer*
  - Local regulations support services

## Game/Rewards API:

- API for making and receiving data requests
    - Get player info (name, location, public profile data), handle games played
    - Third-parties have a way to send rewards to players account, as incentives
    - Can be used by any companies who want to partner (*Airlines*, *Concerts*, *Sports teams*, etc...)
-

# Technological Challenges

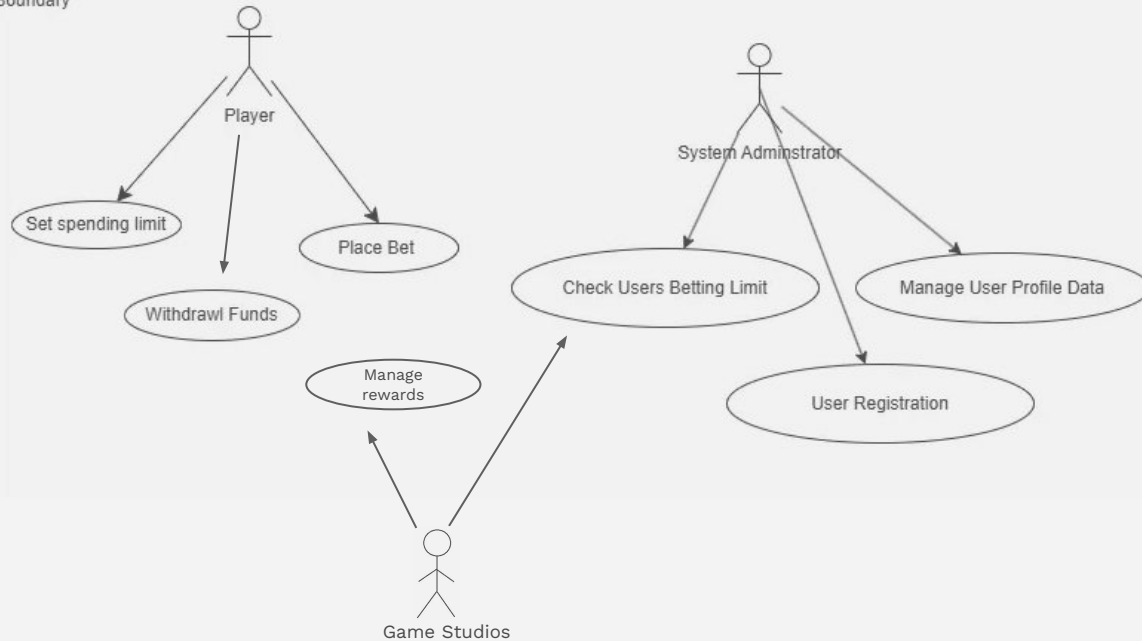
- **Security**
  - Protecting user data and financial transactions requires strong encryption and secure authentication
- **Data Processing**
  - Features like live sports betting and real-time game updates require low-latency data processing
- **User Experience and Responsiveness**
  - Users expect a smooth, fast, and intuitive interface with minimal load times
- **Performance**
  - The application must handle a large number of concurrent users, especially during peak betting times
- **Payment Processing/Payment Methods and Transaction Speed**
  - Handling fast, secure deposits and withdrawals across different payment methods
- **Compatibility with iOS and Android**
  - The app would ideally need to function smoothly on web browsers, iOS, and Android devices
- **Fraud Prevention**
  - Preventing cheating, money laundering, and bot activity is crucial for maintaining trust





# Use Case

Online  
Casino  
System  
Boundary





**Thank You!**

**Questions?**

